

**13\_02 Boundary Model - Township, City, County, and State Limits**

**Question:**

I am preparing a hearing map for this project and I have both city and county limit lines. I noticed there was only one level for townships and cities, and was wondering if there should be a seperate level for counties and states. If so should there be a folder under the boundry folder in d&c for limit lines?

**Answer:**

**Question #1:**

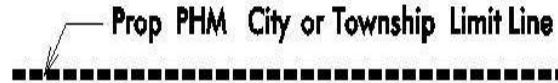
[ *I noticed there was only one level for townships and cities, and was wondering if there should be a separate level for counties and states?* ]

**Answer #1:**

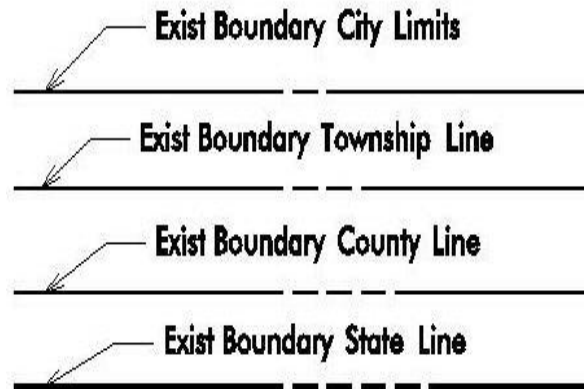
Since The Roadway Design Manual, Part II, Chapter 21-2, items 2B through 2D, only requires the labeling of township, city, county, and state limits, it is in the best interest of Roadway Design not create additional Roadway PHM levels for county and state limits as well as a separate level for township and city limits.

- (2) LABEL (large enough to be seen easily)
  - (A) Show Begin TIP Project in bold, black, capital letters and arrow
  - Example: BEGIN TIP PROJECT R-9999
  - L- STA. 10+00.00
  - (B) State Lines
  - (C) County Lines
  - (D) City Limits and Town Limits
  - (E) Creeks, Rivers and Lakes

Our current public hearing map practice is to trace over the city or town limit lines on a Roadway level **Prop PHM City or Township Limit Line**, which is just a bold dashed line (line code = 3). To save some unnecessary work and to separate the four different types of limits delineated on public hearing maps, this procedure is no longer required with the newer hearing maps being prepared.



For the preliminary survey TOPO files or shelf base mapping files delivered to Roadway by Photogrammetry for hearing map preparation, these limit levels will retain their custom linestyle value.



Regardless of what level these limit lines are on (old vs. new), our Roadway Hearing Map design script will automatically "catch" what custom linestyle they are on and plot them **bold** (weight of 12). These custom linestyle boundary names from NCMAP (Photogrammetry and Location and Surveys) that are affected include;

- ncmmap Bdy Cit
- ncmmap Bdy Cou
- ncmmap Bdy Sta
- ncmmap Bdy Twn

But not;

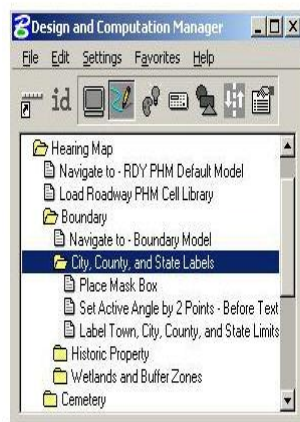
- ncmmap Bdy PL (Property Line)
- ncmmap Bdy Res (Reservation)

**Question #2:**

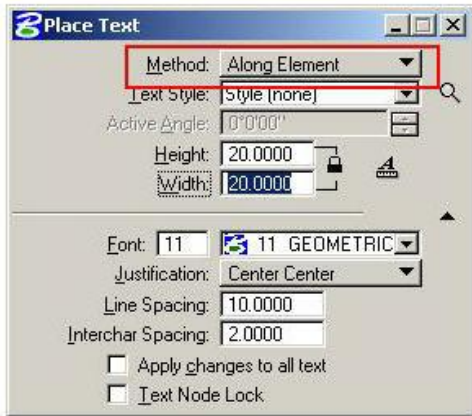
[ *If so should there be a folder under the boundary folder in d&c for limit lines?* ]

**Answer #2:**

The Roadway Hearing Map Design and Computation Manager has been modified to include the labeling of township, city, county, and state limits.

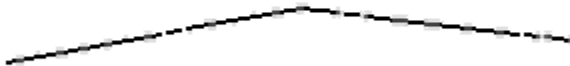


The first two items are optional. As alternative, if the labels are to place along the limit lines (linestring), then after double clicking on the **Label Town, City, County, and State Labels** item, change the place text method to "**Along Element**" and identify the limit line as the element to place the label along.



Note limit labels are **to the inside**.

#### **Video- Labeling Limits Along an Element**



For now, Roadway level Prop PHM City or Township Limit Line will remain in the Roadway Levels DGNLIB for a limited period of time. Then it will be removed from our level library. Also these custom linestyle limits will be included in the future public hearing map legend cell as an option per project specific.